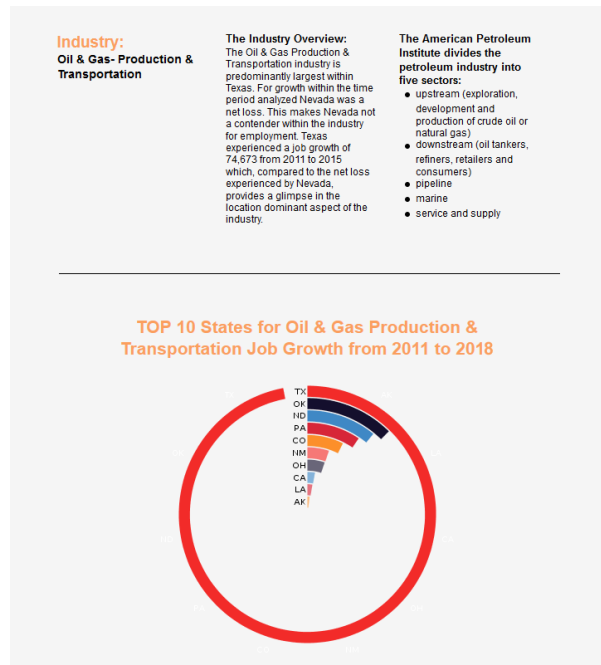
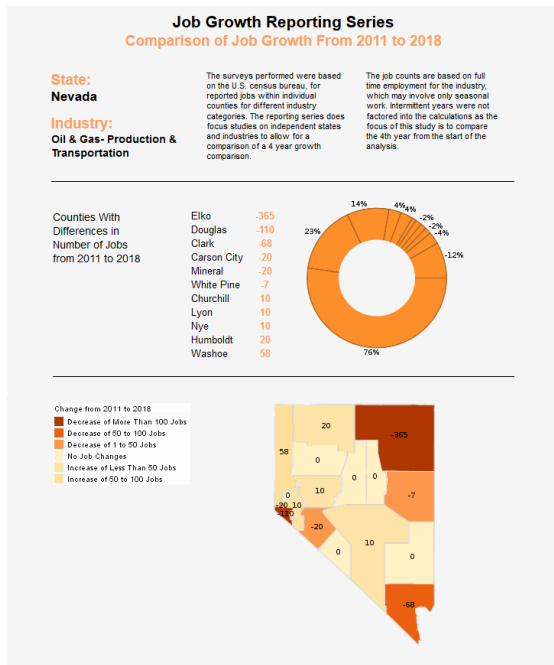


## Introduction ▶

Style Report™ Enterprise is an edition of Style Intelligence that focuses on enterprise reporting. It provides production reports and web-based interactive reports in a zero-client, web environment.

Style Report Enterprise's small footprint, 100% Java, pure web architecture delivers an embedding and integration-ready platform. As a J2EE drop-in web application, Style Report Enterprise not only integrates with the web user interface, it also leverages the same application server platform as that of the embedding application, providing a powerful, flexible reporting and publishing solution for enterprises and ISV's.

## Published Report Examples



## Advantages ▶

### PROFESSIONAL GRADE REPORT WRITING

- Manipulate and present raw data with sophisticated layout and flow
- Embed business logic using JavaScript
- High-fidelity output in multiple formats

### ON-DEMAND/BATCH REPORTING WITH ARCHIVING

- Get on-demand real time information
- Historical data storage via archive mechanism with versioning
- Minimize performance bottlenecks with scheduled batch reporting
- Large data reporting via data segmentation
- Personalized delivery mechanism

### EMBEDDING AND INTEGRATION

- Leverage best-in-breed publishing technology instead of building and maintaining it
- Flexibility to accommodate the most demanding integration requirements

## Features ▶

### DATA ACCESS

**Multiple Data Sources:** Relational databases (JDBC), multidimensional databases, XML, SOAP, Java beans (POJO), EJB beans, Microsoft Excel, flat files, plus custom data access adapters (additional sources via Style Intelligence)

**Data Modeling:** Graphical data modeler and query builder; re-usable Data Blocks

**Data Mashup:** Combine data within a single data source or across multiple data sources into unified datasets using union, intersection, minus, inner/outer joins, etc.

**User/Role Based Filtering:** Define query filters for data access restriction based on User/Role permissions on data cell level

### PRODUCTION REPORT DESIGN

**Report Designer:** GUI based report writer for creation of professional grade WYSIWYG reports; word processor-like and HTML-like layout

**Multiple SQL Paths:** Queries, stored procedures, or access through data models that create the SQL for you

**Global and Local Queries:** Define queries for a single report or share queries across multiple reports

**Presentation Element Library:** Rich collection of elements to satisfy demanding reporting requirements

**Tables:** Dynamic expanding table, formula table, and super crosstab; spreadsheet-like tabulations for financial reports and ledger accounts

**Grouping & Summary:** Aggregate and group data on multiple levels in both column and row directions; free positioning field based sections (bands)

**Charts:** Configurable charting engine with over 30 different types

**Reusable Components:** Sub-reports, meta-templates, table styles, script functions and report beans; subreport nesting

**Advanced Presentation:** Geographical map and image display with interactive zoom in/out functionality

**Table of Contents:** Dynamic generation of table of contents with live indexing

---

## KEY APPLICATIONS:



### Production Reports

Publish recurring information to a wide audience through various channels and formats.

These reports are typically professionally designed with business logic for pixel perfect presentation.

### Push & Pull Delivery

Publish reports to a server repository for web viewing and archiving, or schedule email bursts to distribution lists.

---

## BUSINESS LOGIC EMBEDDING

**Scripting:** Report, page, or element level scripting using JavaScript

**Highlighting:** Use colors or font properties to conditionally format important information

**Controls:** Conditional control on element visibility and page breaks on-export and on-print report control

**Drilldowns:** Drill into next level reports and URLs

## INTERACTIVE REPORT VIEWING

**User Deployment:** Zero-client, security-controlled web portal

**Exporting:** Export to PDF, Excel, HTML, CSV, Text

**Parameter Sheets:** Staged and cascading parameter prompting dialogs

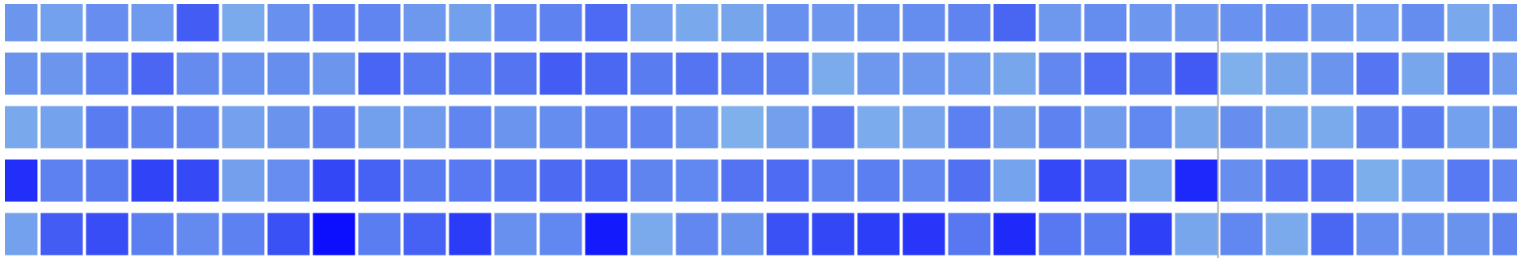
**Drilldowns:** Hide/show details and drill into next level reports and URLs

**Display Interactivity:** In-report sorting, filtering, hide/unhide; summary/detail toggling display; dropdown lists, text fields and other form controls; report element context menu

**Data Timeliness:** Real-time viewing or queued reports

**Distribution:** Email, server-based printing, and client-based printing

**Archiving:** Archived report snapshots with in-report exploration



## HIGH PERFORMANCE AND SCALABILITY

**Connection Pooling:** Share database connections for high performance and efficient resource usage

**Threading and Streaming:** Report engine uses data streaming and page streaming; concurrent report threading control

**Caching:** Configurable caching of query result sets and reports

**Bursting:** Run scheduled reports with internal data segmentation based on user or role

**Report Pregeneration:** Generate large reports at scheduled intervals to reduce load/bottlenecks during high demand periods

**Cluster Configuration:** Built-in Spark/Hadoop cluster for load balancing across servers

**Resource Management:** resource management on file system and database

## ENTERPRISE ENVIRONMENT

**Administration:** Single-stop remote web-based administration module for configuration, security and deployment

**Security Model:** Configurable security control on data cell, report, and folder; by individual, role, group, and functional module

**Encryption:** HTTPS support and encryption on PDF outputs

**Archive with Versioning:** Concurrent versioning of reports for historical viewing and comparison

**User Auditing:** Detailed auditing of user logins, activity, and error logs

**Error Logging:** Detailed logging of report execution cycles with adjustable levels of granularity

**Scheduling and Triggering:** Schedule batch report generation, set conditions

**Team Development:** Central environment for configuration sharing, with built-in locking; XML based templates and global query repository

**Resource Management:** User disk quota control

**Mobile Access:** Supports any Android or iOS mobile device via HTML5

## EMBEDDING AND INTEGRATION

**User Access:** Single sign-on and out-of-box LDAP integration

**Architecture:** Web Services and SOA architecture

**Presentation:** CSS driven presentation customization; comprehensive tag library to embed reports into JSP pages

**Integration Options:** IIS and MS SharePoint; componentized portal

**Java API:** Reporting and server API for embedding within custom Java applications

**Internationalization:** Dynamically translate report data and portal interface based on locale

---

## System Requirements

**Platform:** Intel, AMD, Sun, AIX, AS/400, HP, SPARC, PowerPC, any Java-capable platform

**Operating System:** Windows (8 or 10), Linux, Solaris, HP-Unix, MacOS, JVM 1.8 through 8.x

**CPU:** Intel Core i5 or equivalent

**Memory:** Minimum 8GB

**Hard Disk:** Minimum 800MB

**Application Server:** Tomcat, WebLogic, WebSphere, JBoss, any J2EE-compliant server